



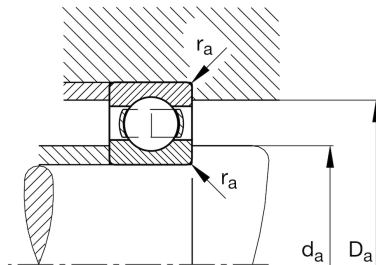
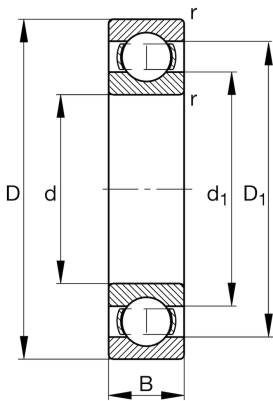
FAG

6009

Deep groove ball bearing

Schaeffler ID:
0167176000000Deep groove ball bearing 60, single row,
steel sheet metal cage

Technical information

**Main Dimensions & Performance Data**

| | | |
|----------|--------------|-----------------------------------|
| d | 45 mm | Bore diameter |
| D | 75 mm | Outside diameter |
| B | 16 mm | Width |
| C_r | 21,200 N | Basic dynamic load rating, radial |
| C_{0r} | 14,400 N | Basic static load rating, radial |
| C_{ur} | 750 N | Fatigue load limit, radial |
| n_G | 13,100 1/min | Limiting speed |
| n_{gr} | 9,700 1/min | Reference speed |
| | 0.236 kg | Weight |

Dimensions

| | | |
|-----------|---------|------------------------------|
| r_{min} | 1 mm | Minimum chamfer dimension |
| D_1 | 65.5 mm | Shoulder diameter outer ring |
| d_1 | 54.2 mm | Shoulder diameter inner ring |

Mounting dimensions

| | | |
|-------------|---------|--------------------------------------|
| $d_{a min}$ | 49.6 mm | Minimum diameter shaft shoulder |
| $D_{a max}$ | 70.4 mm | Maximum diameter of housing shoulder |
| $r_{a max}$ | 1 mm | Maximum fillet radius |

Calculation factors

| | | |
|-------|------|--------------------|
| f_0 | 15.3 | Calculation factor |
|-------|------|--------------------|

Temperature range

| | | |
|-----------|--------|----------------------------|
| T_{min} | -30 °C | Operating temperature min. |
| T_{max} | 120 °C | Operating temperature max. |